

# LeadView CCD-Sensor Professional Digital Camera

6000AC-FL/AM-FL

2800AC-FL/AM-FL

Redefines Fluorescent Images



### Sony Exview HAD CCD II Sensor

The most advanced large-size\* sensor chip brings up to 77% astonishing high QE sensitivity to detect the best moment

### Superb Resolution

The higher resolution\* defines more exquisite details and color saturability

### Peltier (TE) Cooling System

Retains up to -50 degree below ambient temperature at all time to efficiently reduces noise both on screen and image

### USB 3.0

The rapidest data transmission interface ensures highest quality image or dynamic capture with near-zero hesitation and delay

### Ultra-Fine™ Color Engine\*

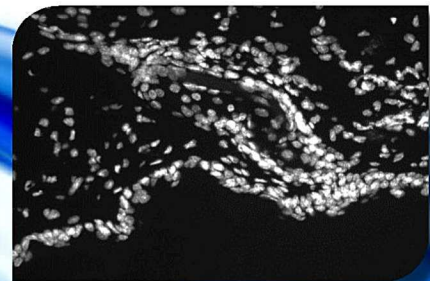
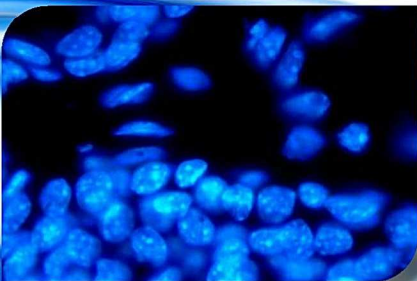
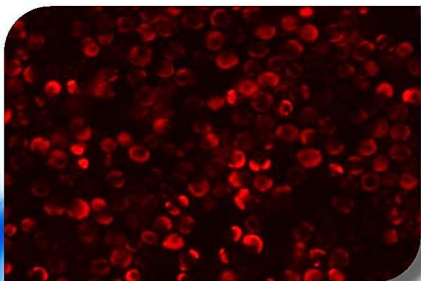
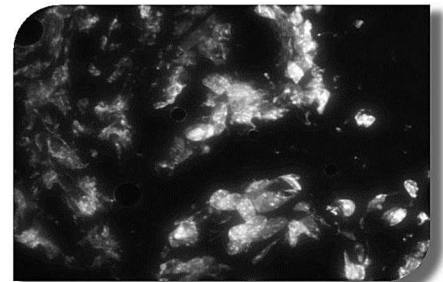
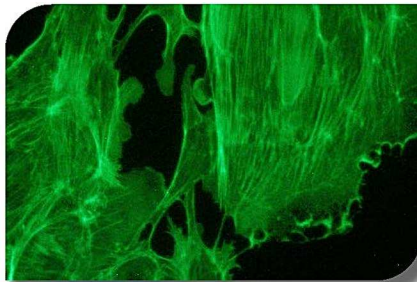
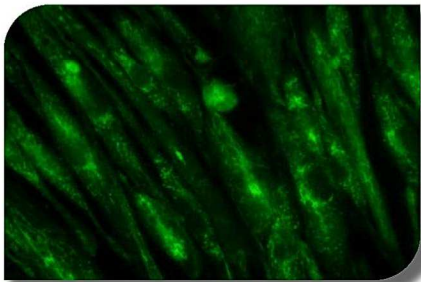
Exclusive patented technique enriches color saturation and enhances contrast with perfect and most natural color reproduction capability

### Powerful Image Processing Software

Integrated features, such as neat and user-friendly interface, easy-to-use and diversified functionality assist user to process images with ease and convenience

### CNC-Cut Alloy Body

The body, made from alloy and cut by CNC, ensures the best protection, robustness and durability for heavy-duty workload



## Specification

Model	6000AC-FL (Color) / 6000AM-FL (Mono)	2800AC-FL (Color) / 2800AM-FL (Mono)
Sensor	Sony ICX694 1" (Up to 77% QE)	Sony ICX674 2/3" (Up to 77% QE)
Pixel	4.54µm x 4.54µm	
Resolution	2748 x 2200 (7.5 FPS) 2748 x 1092 (14 FPS)	1940 x 1460 (15 FPS) 1932 x 1092 (18 FPS)
Binning	1 x 1	1 x 1
Exposure	0.06ms~1h	0.05ms~1h
Software	Included. Please refer to "Software" page for details	

# LeadView CCD-Sensor Professional Digital Camera 5000AC

Satisfies Demand For Exquisite Images

## Sony Super HAD CCD Sensor

2/3" large-size sensor chip brings sharply improved sensitivity to capture the best moment

## Ultra-Fine™ Color Engine

Exclusive patented technique enriches color saturation and enhances contrast with perfect and most natural color reproduction capability

## Superb Resolution

Up to 5M pixel image quality defines more exquisite details and color saturability

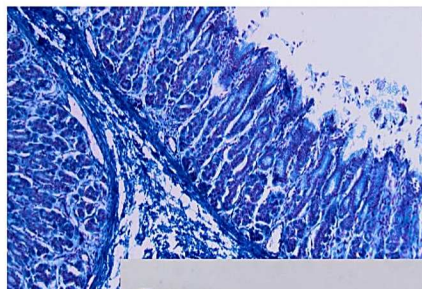


## Zinc Alloy Body

The body, made from zinc alloy provides the best protection, robustness and durability to heavy-duty workload

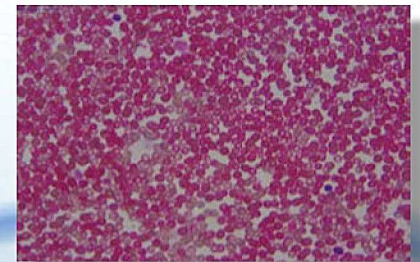
## USB 2.0

Highest quality image or dynamic capture transferred through USB 2.0 ensures compatibility, fast and stable data transmission



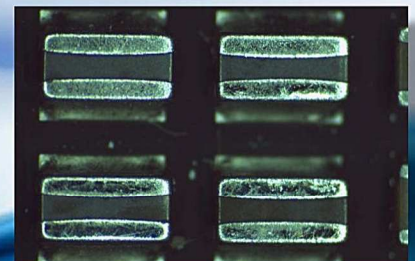
## Powerful Image Processing Software

Integrated features, such as neat and user-friendly interface, easy-to-use and diversified functionality assist user to process images with ease and convenience



## Specification

Model	<b>5000AC (Color)</b>
Sensor	Sony ICX655 2/3"
Pixel	3.45μm x 3.45μm
Resolution	2448 x 2050 (4.3 FPS) 960 x 720 (10.5 FPS)
Binning	1 x 1
Exposure	0.22ms~60s
Software	Included. Please refer to "Software" page for details



萊得科技有限公司 Leader Scientific

地址：新北市新店區中興路一段 270 巷 8 號 1 樓

電話：(02) 8665-4486 傳真：(02) 2913-0886

網址：www.leader-s.com.tw

