

# RH95

Humidity Controller for your Sample Environment



## Sensor at Sample

Accurate humidity measurements and control around the sample

## Smart Desiccant System


Automated self-contained drying mechanism allows long-term testing without dry air supply

## Cross-system Compatibility

Humidity control compatible with Linkam devices and third-party chambers



 [www.linkam.co.uk](http://www.linkam.co.uk)

 +44 (0)1737 363476

 [info@linkam.co.uk](mailto:info@linkam.co.uk)

# Introducing the RH95

The RH95 Relative Humidity Controller is designed to provide environmental sample control to the range of Linkam stages. It allows precise control of water vapour in the environment around a sample without the need for an external dry air supply.

The smallest change in RH% can have huge implications on the characteristics of a sample and how it behaves. When combined with a Linkam stage, or other sealed chambers, the RH95 can be used to control the RH% between 5%-90% at temperatures from ambient to 85°C (dependent on device).

Unlike many other humidity systems, the feedback sensor is located close to the sample block, ensuring accurate humidity control. The RH95 can be combined with light microscopy, Raman, FT-IR and X-ray to further characterise samples.

The RH95 controller is compatible with a wide range of Linkam stages, as well as third-party devices with sealed chambers. It is supplied with a small sealed chamber as standard, which can be used with humidity validation samples.



## Features

### INTEGRATED DESICCANT SYSTEM

Ambient air is dried through a specially designed automatic recycling desiccant system which provides humidity control for months at a time without the need for a costly dry air supply.

### COMPACT DESIGN

The small size of the controller conserves vital benchtop space and provides a neat compact humidity system.

### SENSOR AT POINT OF SAMPLE

A sensor is mounted inside the chamber to create a feedback loop to the controller ensuring precise control of RH between 5%-90% at temperatures from ambient to 85°C (dependent on stage).

### MULTI-SYSTEM COMPATIBILITY

Humidity-compatible versions of Linkam's THMS600, LTS420 and MFS stages are available, along with support for other sealed chambers.

### VALIDATION

A variety of certified salt solutions are available from Linkam to accurately validate the humidity sensors.

### CUSTOM OPTIONS

Please contact us with details of your requirements.

# Application Examples

The precision humidity control of the RH95 is used in combination with Linkam stages and other sealed chambers for a range of applications in research and industry worldwide. These include:

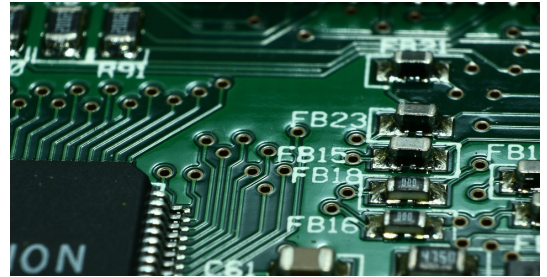
## Semiconductor and Electrical

Environmental stability is very important in the lifetime testing of all electronic devices. Leading multinational companies and research institutes use the RH95 to study water ingress on internal electrical components, polymeric films, aerospace and marine coatings.

Photovoltaics

Conductivity

Corrosion



## Food Research

Within the food and nutrition research industry, the RH95 system is used by leading food and drink manufacturers to study the effect of humidity, or dry air, on food storage conditions, and how humidity affects food samples while heating.

Long-term Storage

Oral Processing

Microorganism Growth



## Pharmaceuticals

The RH95 has many applications within the pharmaceutical field, from drug discovery to manufacturing and quality assurance. Humidity control facilitates the understanding of the behaviour and breakdown of pharmaceutical compounds, and how their packaging protects them.

Shelf Life

Dissolution

Packaging



# Technical Specification

## Humidity Range

5% - 90% RH (dependent on stage and with a stage temperature between ambient and 85°C)

## Sensor Accuracy

Up to +/- 1.8%

## Stability

+/- 0.5% (at control value)

## Size

135 x 240 x 264mm

## Compatible Linkam Stages

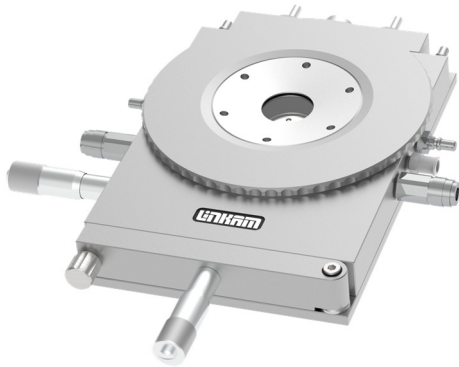
THMS600, LTS420, MFS and others

## Sealed Chamber Capacity

Maximum 2000ml



## Discover More...

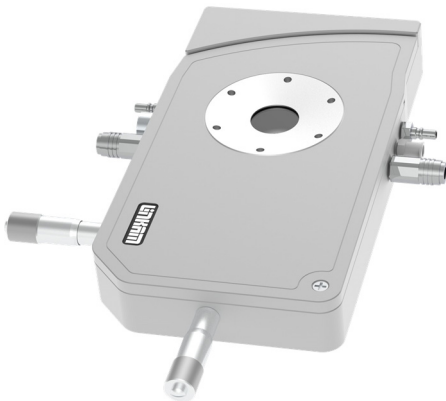


### THMS600-H

The THMS600-H is based on our hugely popular THMS600, one of the most widely used heating and freezing microscope stages available.

The THMS600-H is used in many applications where high heating/cooling rates and precise accuracy and stability are needed. The THMS600-H has a temperature range of  $< -195^{\circ}\text{C}$  to  $600^{\circ}\text{C}$  (ambient to  $85^{\circ}\text{C}$  when using the RH95).

The THMS600-H adds the ability to control the humidity (when combined with the RH95 Relative Humidity Controller) inside the chamber alongside precise temperature control. The RH% is accurately controlled between 5%-90% (dependent on temperature).



### LTS420-H

The LTS420 family of devices are optimised for isothermal analysis of larger samples where high speed heating and cooling and excellent thermal stability are required. It features a 53.5mm x 43mm silver block with a platinum resistor sensor embedded close to the surface for accurate temperature measurements.

The LTS420-H adds the ability to control the humidity inside the chamber (when combined with the RH95 Relative Humidity Controller) alongside precise temperature control.

The LTS420-H is an easy-to-use, versatile heating and freezing device allowing accurate temperature measurements in the range of  $< -195^{\circ}\text{C}$  to  $420^{\circ}\text{C}$  (ambient to  $85^{\circ}\text{C}$  when using the RH95). The humidity is accurately controlled between 5%-90% (dependent on temperature).



### MFS-H

The MFS provides an ideal platform for analysing the tensile properties of materials in relation to temperature and other environmental conditions, including humidity control (when combined with our RH95), or for in situ submerged measurements with our liquid cell.

The device features unparalleled accuracy and a variety of temperature range options from  $< -195^{\circ}\text{C}$  up to  $350^{\circ}\text{C}$  (ambient to  $85^{\circ}\text{C}$  when using the RH95), and humidity from 5% to 90% RH (dependent on temperature).

The MFS can be used for precise mechanical and optical characterisation including modulus analysis, single fibre strength tests, failure mode and fracture analysis, peel adhesion tests. It can also be customised for other applications with our custom-designed grips.

## Contact Details


Linkam Scientific Instruments  
Unit 8 Epsom Downs Metro Centre  
Waterfield  
Tadworth  
KT20 5LR  
United Kingdom

We make scientific instruments that help characterise materials from polymers to biological tissue and metals to composites. Our instruments are used for research by the world's most advanced scientific organisations and companies. Each of our instruments are designed and manufactured in-house by our team of highly experienced electronics, software and mechanical design engineers. We design and develop solutions for sample characterisation by collaborating with the best scientists in the world. Will you be next?

Linkam products are constantly being improved, hence specifications are subject to change without notice.  
TASC products are a family of techniques developed by Prof. Mike Reading (Cyversa) and Linkam.



 [www.linkam.co.uk](http://www.linkam.co.uk)

 +44 (0)1737 363476

 [info@linkam.co.uk](mailto:info@linkam.co.uk)